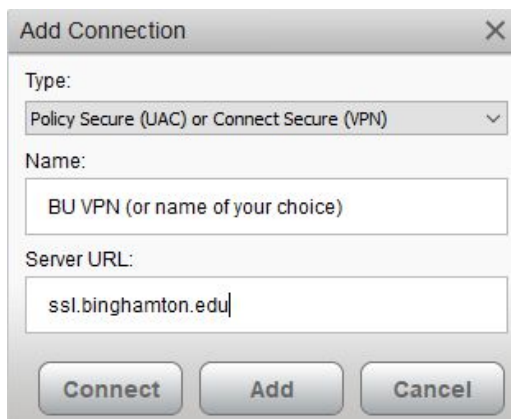



VPN

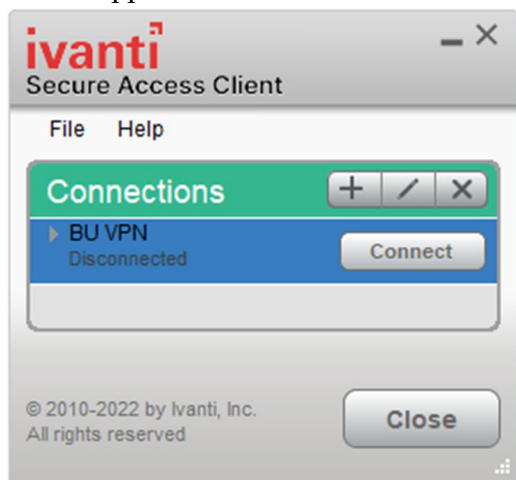
VPN software allows access to campus-only resources from off-campus locations. The website <https://ssl.binghamton.edu> provides bookmarks to campus-only resources directly through the web page. To use a remote desktop app or to access an application or system that is restricted while you are off campus, install the Ivanti Secure Access Client.

Ivanti Secure Access Client can be installed by logging in to <https://ssl.binghamton.edu> and clicking on the appropriate bookmark to download and install the desired version of Ivanti for your operating system (Windows 32 bit or 64 bit, Mac OS or Linux). Once it is installed, Ivanti will be listed in your programs and as a shortcut in the Windows System Tray or Mac Menu Bar. You do not need to access the SSL VPN web page each time you want to connect to VPN.

After Ivanti Secure Access Client is installed in your applications folder or programs menu, run the program. The first time you run it you will need to click the “+” symbol to add a connection to **ssl.binghamton.edu**. Once it is added, click connect and then you will be prompted to sign in with your BU password. Once it is connected, you will be able to access campus resources from your computer.



Once the connection is added, you can connect at any time by clicking the Ivanti icon , selecting the VPN menu and choosing Connect. Alternately, you can open the program from your Programs list or Applications folder then click the Connect button.



Ivanti Secure Access Client is available from the App store on iOS or the Google Play store for Android if you are connecting from a mobile device.